

8025



SOCIALIZING



CLIMBING



SLIDING



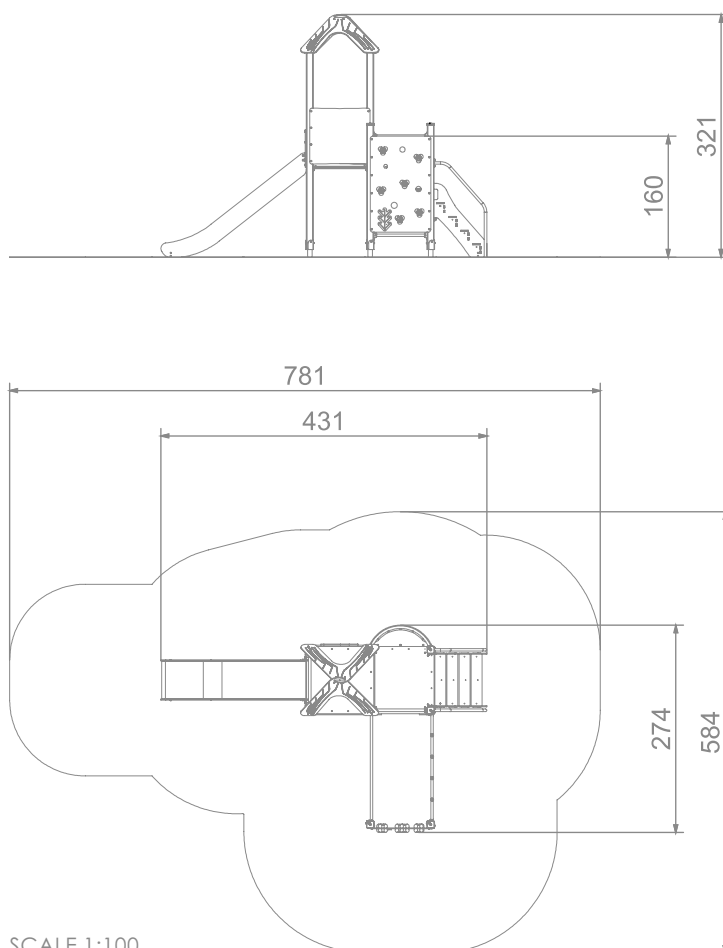
## INFORMATION ABOUT THE PRODUCT

Dimensions	274 x 431 cm
Safety zone	584 x 781 cm
Safety zone area	32 m <sup>2</sup>
Overall height	321 cm
Free fall height	160 cm
Amount of users	12
Product complies with EN 1176-1:2017-12	YES
Availability of spare parts	YES
Age range	3-12
According to EN 1176-1:2017-12 norm, the product requires applying a safety surface according to the product's free fall height.	



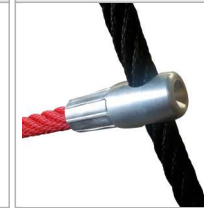
8025

INFORMATION FOR ARCHITECTS



SCALE 1:100

## MATERIALS:

SOFT CONIFER WOOD CORELESS, GLUED IN LAYERS WITH POLYURETHANE GLUES, TOTALLY RESISTANT TO WATER.	WOODEN POSTS ANCHORED TO THE GROUND WITH POWDER GALVANIZED AND POWDER COATED STEEL ANCHORS.	PATENTED SYSTEM OF CONNECTORS AND CLAMPS MADE OF STRONG ALUMINIUM ALLOY.	PLATES OF THE WALLS MADE OF COLOURFUL TRIPLE LAYERED 15 MM HDPE POLYETHYLENE, IN THE HIGHEST QUALITY, TOTALLY DAMP-PROOF.	ROPE ENDINGS PRESSED IN A SLEEVE MADE OF DURABLE ALUMINIUM ALLOY.
				
ANTI-SLIP ANTHRACITE 10MM HPL PLATFORM PLATE WITH A VERY HIGH RESISTANCE TO WEATHER CONDITIONS AND ATTRITION.	SLIDES MADE OF STAINLESS STEEL AISI 304. METAL SHEET WITH A THICKNESS OF 2 MM FORMED IN A CNC TECHNIQUE.	SYSTEM OF CONNECTORS AND CLAMPS MADE OF STRONG ALUMINIUM ALLOY.	SOLID AND ESTHETIC ROPE CONNECTORS MADE OF INJECTION MOLDED POLYAMIDE.	POLIPROPYLENE ROPES PPMULTISPLIT TYPE WITH A STEEL CORE AND A DIMETER OF 16 MM.
				
				CLIMBING ROCKS MADE OF CHIPPINGS AND COLOURFUL POLYESTER RESIN.
				