

4111

SINGLE



INFORMATION ABOUT THE PRODUCT

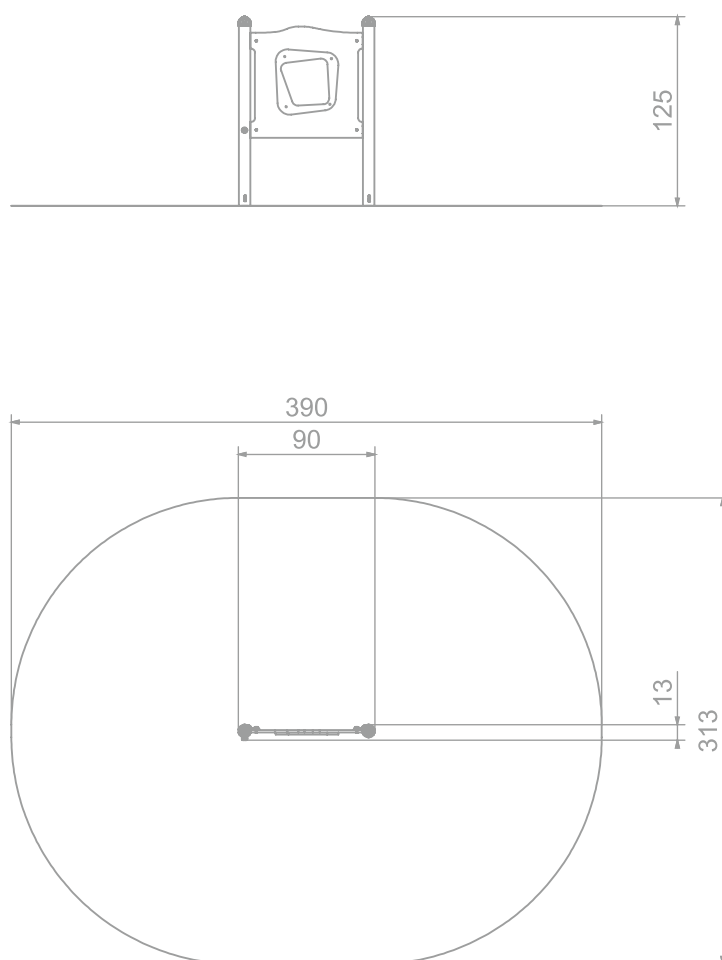
Dimensions	13 x 90 cm
Safety zone	313 x 390 cm
Free space	11 m²
Overall height	125 cm
Free fall height	
Amount of users	1
Product complies with PN-EN 1176-1:2017-12	YES
Availability of spare parts	YES
Age range	1-7
According to PN-EN 1176-1:2017-12 norm, the product requires applying a safety surface according to the product's free fall height.	



4111

SINGLE

INFORMATION FOR ARCHITECTS



SCALE 1:50

MATERIALS:

SOLID CONSTRUCTION
MADE OF STAINLESS STEEL
AISI 304 TOTALLY RESISTANT
TO WEATHER CONDITIONS



PLATES OF THE WALLS MADE
OF COLORFUL TRIPLE
LAYERED 15 MM HDPE
POLYETHYLENE



SAFE PIPE PLUGS MADE OF
INJECTION MOLDED
POLYAMIDE



PLATE AND ROPE
CONNECTORS MADE OF
INJECTION MOLDED
POLYAMIDE

