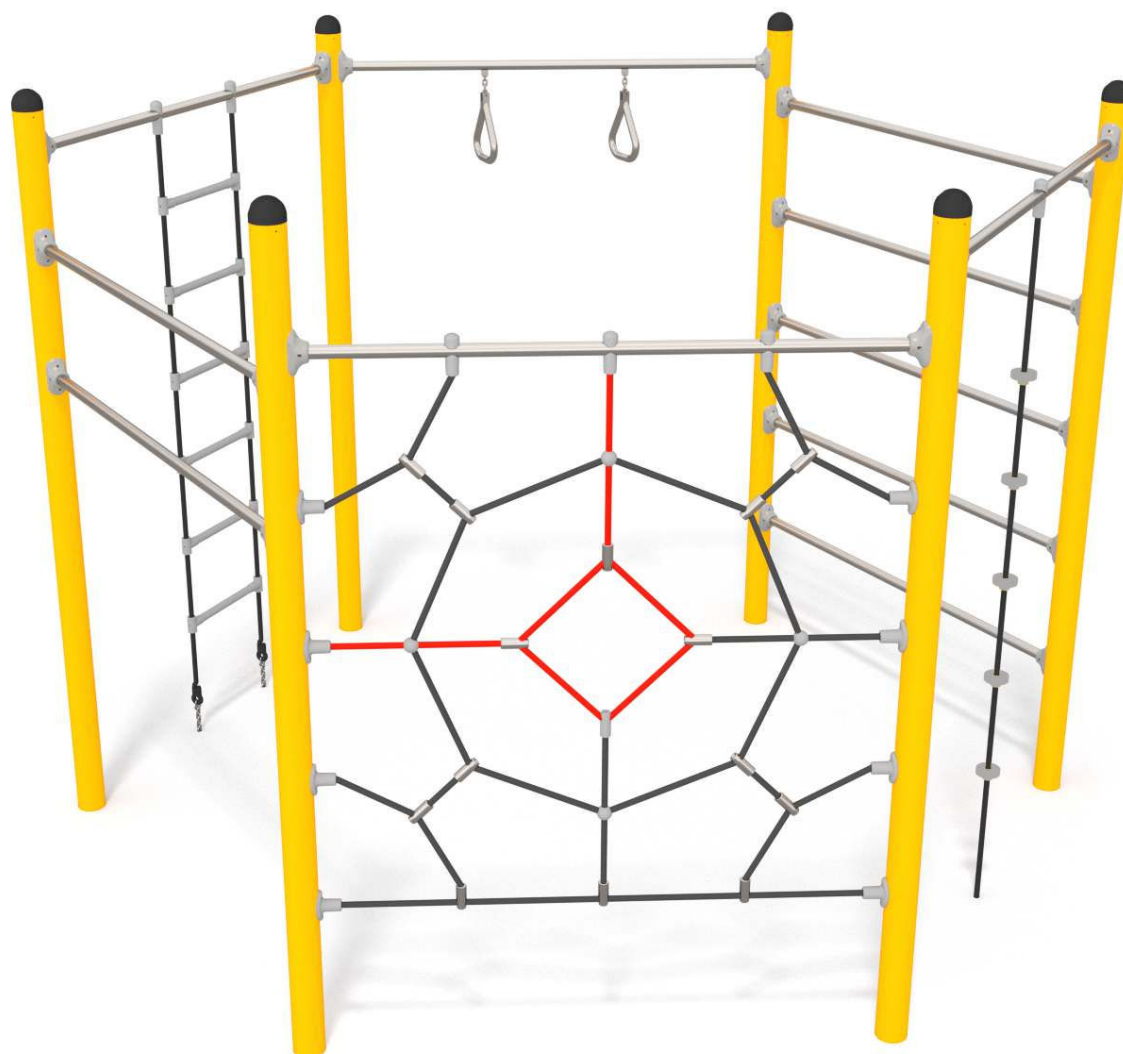


1144



SOCJALIZACJA



WSPINANIE

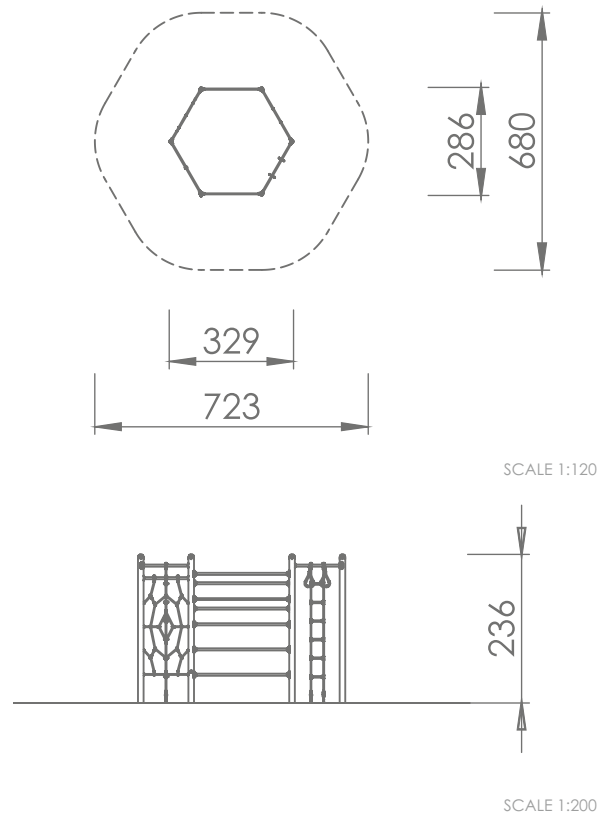


INTEGRACJA
SENSORYCZNA

INFORMATION ABOUT THE PRODUCT

Dimensions	286 x 329 cm
Safety zone	680 x 723 cm
Safety zone area	39 m ²
Overall height	236 cm
Free fall height	220 cm
Amount of users	10
Product complies with EN 1176-1:2017-12	YES
Availability of spare parts	YES
Age range	3-12
According to EN 1176-1:2017-12 norm, the product requires applying a safety surface according to the product's free fall height.	





MATERIALS:

ROPE ENDINGS PRESSED IN A SLEEVE MADE OF DURABLE ALUMINUM ALLOY	SYSTEM OF CONNECTORS AND CLAMPS MADE OF STRONG ALUMINUM ALLOY	POST ENDINGS FINISHED WITH SOFT EPDM RUBBER
SYSTEM OF CONNECTORS AND CLAMPS MADE OF STRONG ALUMINUM ALLOY	POLYPROPYLENE ROPES PPMULTISPLIT TYPE WITH A STEEL CORE AND A DIAMETER OF 16 MM	ROPE LADDER STEPS AND ROPE KNOTS MADE OF INJECTION MOLDED POLYAMIDE
		SOLID CONSTRUCTION MADE BLACK STEEL S235JR CLEANED IN THE SANDBLASTING PROCESS